

Elevation

1332 SQ FT Per Side

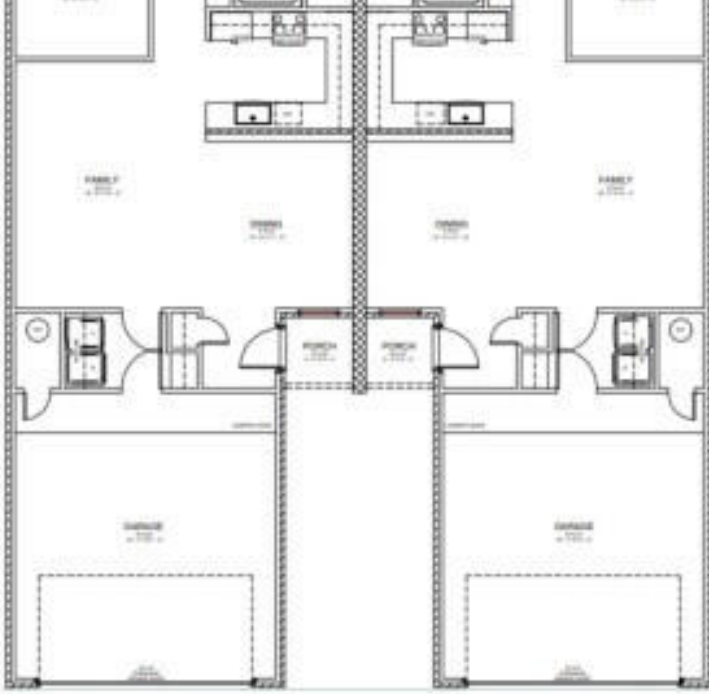
3 Bed / 2 Bath

2 Car Garage

Take the hassle out of construction with a built-to-suit duplex in *The Overlook*—a premier community in a fast-growing area. These spacious, build-ready lots are now available with custom construction included, allowing you to secure your ideal investment or dream home without the stress of managing a build. Whether you're an owner-occupant, investor, or builder, our team will deliver a high-quality duplex tailored to your needs, designed to maximize rental demand.

\$65,000

- 0 baths
- Unimproved Land
- Land
- Active



Floor Plan

1207 CORPUS AVENUE, WOLFFORTH, TX, 79382

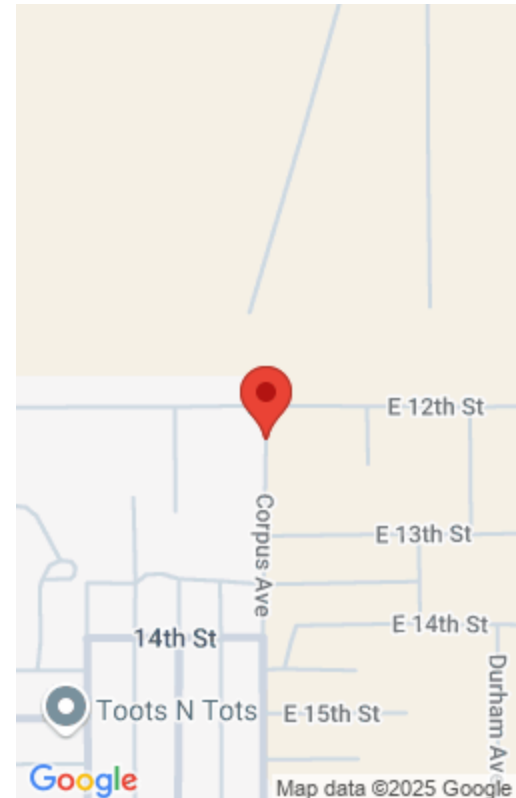
<https://aycockrealttytx.com>

Transform your construction experience into a breeze with our customizable duplexes in *The Overlook*, where you can effortlessly invest in a spacious lot and enjoy a high-quality home tailored just for you, all while capitalizing on the booming rental market! Whether you're an owner-occupant or investor, we can Build-to-Suit!!!



Vanessa Perez

Aycock Realty Group, LLC



Basics

Category: Land

Status: Active

Lot size: 0.15 sq ft

Address: 1207 Corpus Avenue, Wolfforth, TX, 79382

Type: Unimproved Land

Bathrooms: 0 baths

Lot Size Acres: 0.15 acres

County: Lubbock

Building Details

Sewer: Public Sewer

Possible Use: Single Family

Current Use: Subdivision

Amenities & Features

Basement: No

Utilities: Electricity Available, Natural Gas Available

Private Pool: No

Fireplace: No

Fencing: None

Parking Features: Paved

WaterSource: Public

Nearby Schools

Elementary School: Upland Heights

School Information

HighSchool: Frenship

Middle Or Junior School: Frenship

Miscellaneous



Road Surface Type: All Weather

Listing Terms: Cash, Conventional

Courtesy of

List Office Name: Aycock Realty Group, LLC

