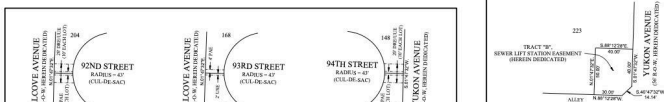




LINE	BEARING	DISTANCE
L1	N 89° 47' 32" W	21.21
L2	S 43° 12' 28" E	21.21
L3	N 89° 47' 32" W	21.21
L4	N 89° 47' 32" W	21.21
L5	S 43° 12' 28" E	21.21
L6	N 89° 47' 32" W	21.21
L7	S 43° 12' 28" E	21.21
L8	N 89° 47' 32" W	21.21
L9	S 43° 12' 28" E	21.21
L10	N 89° 47' 32" W	21.21
L11	S 43° 12' 28" E	21.21
L12	N 89° 47' 32" W	21.21
L13	S 43° 12' 28" E	21.21
L14	N 89° 47' 32" W	21.21
L15	S 43° 12' 28" E	21.21
L16	N 89° 47' 32" W	21.21
L17	S 43° 12' 28" E	21.21
L18	N 89° 47' 32" W	21.21
L19	S 43° 12' 28" E	21.21
L20	N 89° 47' 32" W	21.21
L21	S 43° 12' 28" E	21.21
L22	N 89° 47' 32" W	21.21
L23	S 43° 12' 28" E	21.21
L24	N 89° 47' 32" W	21.21
L25	S 43° 12' 28" E	21.21
L26	N 89° 47' 32" W	21.21
L27	S 43° 12' 28" E	21.21
L28	N 89° 47' 32" W	21.21
L29	S 43° 12' 28" E	21.21
L30	N 89° 47' 32" W	21.21
L31	S 43° 12' 28" E	21.21
L32	N 89° 47' 32" W	21.21
L33	S 43° 12' 28" E	21.21
L34	N 89° 47' 32" W	21.21
L35	S 43° 12' 28" E	21.21
L36	N 89° 47' 32" W	21.21
L37	S 43° 12' 28" E	21.21
L38	N 89° 47' 32" W	21.21
L39	S 43° 12' 28" E	21.21
L40	N 89° 47' 32" W	21.21
L41	S 43° 12' 28" E	21.21
L42	N 89° 47' 32" W	21.21
L43	S 43° 12' 28" E	21.21
L44	N 89° 47' 32" W	21.21
L45	S 43° 12' 28" E	21.21
L46	N 89° 47' 32" W	21.21
L47	S 43° 12' 28" E	21.21
L48	N 89° 47' 32" W	21.21
L49	S 43° 12' 28" E	21.21
L50	N 89° 47' 32" W	21.21
L51	S 43° 12' 28" E	21.21
L52	N 89° 47' 32" W	21.21
L53	S 43° 12' 28" E	21.21
L54	N 89° 47' 32" W	21.21
L55	S 43° 12' 28" E	21.21
L56	N 89° 47' 32" W	21.21
L57	S 43° 12' 28" E	21.21
L58	N 89° 47' 32" W	21.21
L59	S 43° 12' 28" E	21.21
L60	N 89° 47' 32" W	21.21
L61	S 43° 12' 28" E	21.21
L62	N 89° 47' 32" W	21.21
L63	S 43° 12' 28" E	21.21
L64	N 89° 47' 32" W	21.21
L65	S 43° 12' 28" E	21.21
L66	N 89° 47' 32" W	21.21
L67	S 43° 12' 28" E	21.21
L68	N 89° 47' 32" W	21.21
L69	S 43° 12' 28" E	21.21
L70	N 89° 47' 32" W	21.21
L71	S 43° 12' 28" E	21.21
L72	N 89° 47' 32" W	21.21
L73	S 43° 12' 28" E	21.21
L74	N 89° 47' 32" W	21.21
L75	S 43° 12' 28" E	21.21
L76	N 89° 47' 32" W	21.21
L77	S 43° 12' 28" E	21.21
L78	N 89° 47' 32" W	21.21
L79	S 43° 12' 28" E	21.21
L80	N 89° 47' 32" W	21.21
L81	S 43° 12' 28" E	21.21
L82	N 89° 47' 32" W	21.21
L83	S 43° 12' 28" E	21.21
L84	N 89° 47' 32" W	21.21
L85	S 43° 12' 28" E	21.21
L86	N 89° 47' 32" W	21.21
L87	S 43° 12' 28" E	21.21
L88	N 89° 47' 32" W	21.21
L89	S 43° 12' 28" E	21.21
L90	N 89° 47' 32" W	21.21
L91	S 43° 12' 28" E	21.21
L92	N 89° 47' 32" W	21.21
L93	S 43° 12' 28" E	21.21
L94	N 89° 47' 32" W	21.21
L95	S 43° 12' 28" E	21.21
L96	N 89° 47' 32" W	21.21
L97	S 43° 12' 28" E	21.21
L98	N 89° 47' 32" W	21.21
L99	S 43° 12' 28" E	21.21
L100	N 89° 47' 32" W	21.21

CURVE	RADIUS	ARC LENGTH	DELTA ANGLE	CHORD LENGTH	CHORD BEARING
C1	45.00	3.88	37° 12' 28"	3.88	S 89° 47' 32" E
C2	45.00	23.18	37° 12' 28"	23.88	S 43° 12' 28" E
C3	45.00	36.89	47° 28' 51"	36.89	S 12° 28' 51" E
C4	45.00	59.86	79° 53' 28"	59.22	N 47° 54' 19" E
C5	45.00	87.87	89° 21' 10"	81.09	N 42° 28' 07" W
C6	45.00	27.82	39° 48' 29"	27.10	S 72° 50' 59" W
C7	45.00	26.06	37° 18' 00"	26.00	S 72° 50' 59" W
C8	45.00	3.37	4° 46' 20"	3.37	N 89° 24' 07" E
C9	45.00	22.73	32° 31' 44"	22.42	N 57° 44' 07" E
C10	45.00	36.36	48° 52' 58"	35.01	N 32° 29' 22" E
C11	45.00	39.32	79° 16' 40"	34.86	S 17° 34' 48" E
C12	45.00	69.50	79° 16' 40"	64.86	S 47° 25' 57" W
C13	45.00	36.36	48° 52' 58"	35.01	N 14° 34' 07" W



- NOTES:
- SCALE 1" = 100'
  - HEAVY LINES INDICATE PLAT LIMITS
  - ALL STREETS, ALLEYS, AND EASEMENTS WITHIN PLAT LIMITS ARE HEREIN DEDICATED, UNLESS NOTED OTHERWISE
  - NO ADJUSTMENT SHALL BE MADE ON ANY SURVEY CERTIFICATE THAT IS NOT IN ACCORDANCE WITH AN APPROVED FINAL PLAT UNLESS AN EXCEPTION IS PROVIDED BY THE PLANNING AND ZONING COMMISSION POLICY OR BY THE LUBBOCK CODE OF ORDINANCES
  - ALL UTILITY SERVICES SHALL BE IN ACCORDANCE WITH THE "UNDERGROUND UTILITIES POLICY" STATEMENT BY THE PLANNING AND ZONING COMMISSION OF THE CITY OF LUBBOCK, TEXAS AND THE PROVISIONS OF SECTION 16.06 OF THE LUBBOCK CODE OF ORDINANCES
  - ALL EXISTING OR PROPOSED UTILITY SERVICES TO AND ON TRACTS INDICATED BY THIS PLAT SHALL BE CONTAINED IN THE PUBLIC RIGHT-OF-WAY AND PUBLIC OR PRIVATE UTILITY EASEMENTS. UTILITY SERVICE INSTALLATION REQUESTED AT A FUTURE DATE AND NOT WITHIN AN EASEMENT INDICATED BY THIS PLAT, SHALL BE WITHIN A PROPER UTILITY EASEMENT GRANTED BY THE OWNER OF SAID PROPERTY BY SEPARATE RECORDS INSTANTLY PRIOR TO THE PROVISION OF SUCH SERVICE. SUCH EASEMENTS SHALL BE AT THE EXPENSE OF THE ENTITY REQUESTING SUCH INSTALLATION
  - ALL EASEMENTS HEREIN GRANTED SHALL ENTITLE THE CITY OR THE UTILITY COMPANY USING SUCH EASEMENTS TO THE RIGHT TO REMOVE, REPAIR OR REPLACE ANY LINES, PIPES, CONDUITS, OR POLES WITHIN SUCH EASEMENTS AS MAY BE DETERMINED BY THE CITY OR UTILITY COMPANY WITHOUT THE CITY OR UTILITY COMPANY BEING RESPONSIBLE OR LIABLE FOR THE REPLACEMENT OR IMPROVEMENTS, PAVING OR SURFACING OF THE EASEMENT (EXCEPT FOR SUCH REPAIR, REMOVAL, OR REPLACEMENT EASEMENTS DESIGNATED OR INTENDED FOR VEHICULAR PASSAGE (UTILITY AND ELECTRICITY) OR PEDESTRIAN ACCESS SHALL NOT BE FORCED OR OTHERWISE OBLIGATED)
  - ANY EASEMENTS OR RIGHTS-OF-WAY SHOWN AS "TO BE DEDICATED BY SEPARATE INSTRUMENT" ARE SHOWN ON THE PLAT FOR INFORMATION PURPOSES ONLY. THIS PLAT DOES NOT DEDICATE SAID EASEMENTS
  - MINIMUM FLOOR ELEVATIONS SHALL CONFORM TO THE REQUIREMENTS OF THE LUBBOCK DRAINAGE CRITERIA MANUAL, AS ADOPTED BY ORDINANCE 10022, AS AMENDED, AND SECTION 16.06.111, SECTION 16.06 AND SECTION 16.06.075 OF THE LUBBOCK CODE OF ORDINANCES
  - IN ORDER TO PREVENT DAMAGE TO PUBLIC AND PRIVATE UTILITIES AND TO MINIMIZE AND OR ELIMINATE INTERRUPTION OF UTILITY SERVICES, THE CITY OF LUBBOCK SOLID WASTE SERVICES DEPARTMENT REQUESTS THAT NO UTILITY METERS, METER BASES, PEDISTALS, ETC., PUBLIC OR PRIVATE, BE PLACED IN THE CHAMBERED CORNERS OF ALLEY WAYS
  - DEVELOPER EASEMENT  
LPL = LUBBOCK POWER & LIGHT  
PAC = PEDESTRIAN ACCESS EASEMENT  
TPE = 4' X 4' (MINIMUM) TRANSFORMER PAD EASEMENT (HEREIN GRANTED TO SPEC), INDICATED BY SYMBOL SE  
USE = UNDERGROUND STREET LIGHT CABLE EASEMENT (HEREIN GRANTED TO LPL)
  - ALCOVE = UNDERGROUND UTILITY EASEMENT  
ALCOVE = RIGHT-OF-WAY  
SECT = SECT 16.06.111 (PUBLIC ELECTRICITY)  
CR = CONTROLLING MONUMENT  
COPR = COUNTY CLERK'S FILE NUMBER  
PBD = PLAT AND DEDICATION NUMBER  
PBD = PHYSICAL MONUMENT OF RECORD DEDICATION
  - ALL CORNERS MONUMENTED WITH 12" IRON ROD WITH CAP MARKED "AND ENGINEERING" UNLESS OTHERWISE SPECIFIED
  - BEARINGS AND GRID BEARINGS RELATIVE TO THE TEXAS COORDINATE SYSTEM OF 1983, TEXAS NORTH CENTRAL ZONE, CONVERGENCE ANGLE TO THIS NORTH IS 41° 18' 00". THE CORNER SCALE FACTOR IS 0.999998
  - COORDINATES SHOWN HEREON ARE BASED ON THE TEXAS COORDINATE SYSTEM OF 1983, TEXAS NORTH CENTRAL ZONE, DISTANCES AS SHOWN HEREON ARE IN FEET, INCHES, AND SURVEY FEET
  - THESE PLAT LIMITS CONTAIN 25.748 ACRES OF LAND
  - DESCRIPTION OF THESE PLAT LIMITS ARE ON A SEPARATE DOCUMENT, OF SAME DATE HEREAFTER.

APPROVED THIS \_\_\_\_\_ DAY OF \_\_\_\_\_, 20\_\_\_\_, BY THE PLANNING AND ZONING COMMISSION OF THE CITY OF LUBBOCK, TEXAS.

CHAIRMAN \_\_\_\_\_

PROFESSOR OF PLANNING \_\_\_\_\_

W & SIGN-OFF  
ADDRESSED  
FORM

\$47,500

## 7804 93RD STREET, LUBBOCK, TX, 79424

<https://aycockrealtytx.com>

10 Lots available in Everest Heights addition, located in South-West Lubbock, in the highly desired Frenship school district! These lots can be sold as a package or individually. This property is in close proximity to FISD Schools, conveniently located to Marsha Sharp Freeway, and 82nd Street, as well as the new Covenant Park.



**Jenna Ham**

Aycock Realty Group, LLC

- 0 baths
- Unimproved Land
- Land
- Active



---

## Basics

<b>Category:</b> Land	<b>Type:</b> Unimproved Land
<b>Status:</b> Active	<b>Bathrooms:</b> 0 baths
<b>Lot size:</b> 0.13 sq ft	<b>Lot Size Acres:</b> 0.13 acres
<b>Zoning:</b> C-1	<b>Address:</b> 7804 93rd Street, Lubbock, TX, 79424
<b>County:</b> Lubbock	

---

## Building Details

<b>Sewer:</b> Public Sewer	<b>Current Use:</b> Unimproved
<b>Possible Use:</b> Residential, Single Family	

---

## Amenities & Features

<b>Basement:</b> No	<b>Private Pool:</b> No
<b>Fireplace:</b> No	<b>Fencing:</b> None
<b>WaterSource:</b> Public	<b>Lot Features:</b> City Lot

---

## Nearby Schools

**Elementary School:** Upland Heights

---

## School Information

<b>HighSchool:</b> Frenship	<b>Middle Or Junior School:</b> Frenship
-----------------------------	--

---

## Miscellaneous



Road Surface Type: Paved

Listing Terms: Cash, Conventional, FHA, VA Loan

Courtesy of

List Office Name: Aycock Realty Group, LLC

