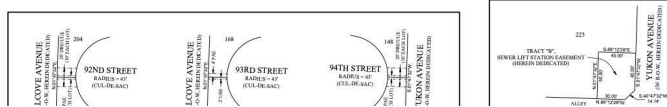




VICINITY MAP  
NOT TO SCALE

LINE	BEARING	DISTANCE
L1	N 89° 47' 32" E	21.21
L2	S 43° 12' 28" E	21.21
L3	N 89° 47' 32" E	21.21
L4	N 88° 12' 28" E	20.00
L5	S 43° 12' 28" E	14.14
L6	N 88° 12' 28" E	14.14
L7	N 89° 47' 32" E	14.14
L8	N 88° 12' 28" E	14.14
L9	S 43° 12' 28" E	14.14
L10	N 88° 12' 28" E	14.14
L11	S 43° 12' 28" E	21.21
L12	N 88° 12' 28" E	20.00
L13	N 89° 47' 32" E	14.14
L14	S 43° 12' 28" E	21.21
L15	N 88° 12' 28" E	21.21
L16	N 84° 12' 28" E	21.21
L17	N 89° 47' 32" E	14.14
L18	S 43° 12' 28" E	14.14
L19	N 88° 12' 28" E	14.14
L20	N 84° 12' 28" E	14.14
L21	S 43° 12' 28" E	21.21
L22	S 43° 12' 28" E	21.21
L23	S 43° 12' 28" E	14.14
L24	S 43° 12' 28" E	21.21
L25	S 43° 12' 28" E	14.14
L26	S 43° 12' 28" E	14.14
L27	S 43° 12' 28" E	21.21
L28	N 89° 47' 32" E	14.14
L29	S 43° 12' 28" E	21.21
L30	N 88° 12' 28" E	20.00
L31	S 43° 12' 28" E	14.14
L32	S 43° 12' 28" E	20.00
L33	S 43° 12' 28" E	14.14
L34	S 43° 12' 28" E	20.00
L35	S 43° 12' 28" E	20.00
L36	S 43° 12' 28" E	20.00
L37	S 43° 12' 28" E	21.21
L38	N 88° 48' 11" E	21.21
L39	N 84° 12' 28" E	14.14

CURVE	RADIUS	ARC LENGTH	DELTA ANGLE	CHORD LENGTH	CHORD BEARING
C1	43.00	2.88	4° 00' 00"	2.88	S 88° 58' 45" E
C2	43.00	23.18	37° 12' 00"	22.86	S 43° 28' 55" E
C3	43.00	36.82	47° 28' 00"	34.88	S 14° 51' 35" E
C4	43.00	59.86	79° 53' 00"	55.22	N 41° 44' 19" E
C5	43.00	87.33	92° 31' 00"	81.00	N 43° 28' 00" W
C6	43.00	27.82	36° 48' 00"	27.10	S 72° 58' 00" W
C7	43.00	26.06	37° 18' 00"	25.60	S 73° 30' 00" W
C8	43.00	3.37	4° 48' 00"	3.37	N 89° 24' 00" E
C9	43.00	22.73	32° 31' 44"	22.42	N 57° 44' 00" E
C10	43.00	26.06	48° 10' 00"	24.51	N 32° 29' 22" E
C11	43.00	39.02	79° 16' 00"	34.86	S 13° 43' 45" E
C12	43.00	59.02	79° 16' 00"	54.86	S 41° 28' 31" W
C13	43.00	36.82	49° 02' 00"	35.01	N 34° 38' 00" W



NOTES:  
 1. SCALE 1" = 100'  
 2. ALL STREETS, ALLEYS, AND EASEMENTS WITHIN PLAT LIMITS ARE HEREBY DEDICATED, UNLESS NOTED OTHERWISE.  
 3. NO CONVEYANCE SHALL BE DEEMED VALID UNLESS IT IS IN ACCORDANCE WITH AN APPROVED FINAL PLAT UNLESS AN EXCEPTION IS PROVIDED BY THE PLANNING AND ZONING COMMISSION POLICY OR BY THE LUBBOCK CODE OF ORDINANCES.  
 4. ALL UTILITY SERVICES SHALL BE IN ACCORDANCE WITH THE "UNDERGROUND UTILITIES POLICY" STATEMENT BY THE PLANNING AND ZONING COMMISSION OF THE CITY OF LUBBOCK, TEXAS AND THE PROVISIONS OF SECTION 16.03(B) OF THE LUBBOCK CODE OF ORDINANCES.  
 5. MAJOR HIGHWAYS OR INTERCHANGES OF THIS PLAT SHALL BE THE SUBDIVIDER'S EXPENSE. COMPENSATION SHALL BE MADE PRIOR TO RECORDING OF THIS FINAL PLAT.  
 6. ALL EXISTING OR PROPOSED UTILITY SERVICES TO AND ON TRACTS INDICATED BY THIS PLAT SHALL BE CONTAINED IN THE PUBLIC RIGHT-OF-WAY AND PUBLIC OR PRIVATE UTILITY EASEMENTS. UTILITY SERVICE INSTALLATION REQUESTED AT A FUTURE DATE AND NOT WITHIN AN EASEMENT INDICATED BY THIS PLAT, SHALL BE WITHIN A PROPER UTILITY EASEMENT GRANTED BY THE OWNER OF SAID PROPERTY BY SEPARATE RECORDED INSTRUMENT PRIOR TO THE PROVISION OF SUCH SERVICE. SUCH EASEMENTS SHALL BE AT THE EXPENSE OF THE ENTITY REQUESTING SUCH INSTALLATION.  
 7. ALL EASEMENTS HEREBY GRANTED SHALL ENTITILE THE CITY OF LUBBOCK USING SUCH EASEMENTS TO THE RIGHT TO REMOVE, REPAIR OR REPLACE ANY LINES, PIPES, CONDUITS, OR POLES WITHIN SUCH EASEMENTS AS MAY BE DETERMINED BY THE CITY OR UTILITY COMPANY WITHOUT THE CITY OR UTILITY COMPANY BEING RESPONSIBLE OR LIABLE FOR THE INSTALLATION, REPAIRS, REPLACEMENTS, REMOVAL OR SUPPLEMENT OF THE EASEMENT. THE CITY OR UTILITY COMPANY SHALL BE RESPONSIBLE FOR THE REMOVAL OR REPLACEMENT OF EASEMENTS DESIGNATED OR INTENDED FOR VEHICULAR PASSAGE (UTILITY AND ELECTRICITY OR HIGHWAY ACCESS) SHALL NOT BE FORCED OR OTHERWISE OBLIGATED.  
 8. ANY EASEMENTS OR RIGHTS-OF-WAY SHOWN AS TO BE DEDICATED BY SEPARATE INSTRUMENT ARE SHOWN ON THE PLAT FOR INFORMATION PURPOSES ONLY. THESE PLAT LIMITS SHALL NOT BE DEEMED TO CONVEY SUCH EASEMENTS.  
 9. MINIMUM FLOOR ELEVATIONS SHALL CONFORM TO THE REQUIREMENTS OF THE LUBBOCK DRAINAGE CRITERIA MANUAL, AS ADOPTED BY ORDINANCE 7002, AS AMENDED, AND SECTION 16.04, 16.05, SECTION 16.06 AND SECTION 16.07 OF THE LUBBOCK CODE OF ORDINANCES.  
 10. THE SUBDIVIDER SHALL BE RESPONSIBLE FOR THE INSTALLATION OF ALL UTILITY SERVICES TO THE PROPERTY. THE CITY OF LUBBOCK SHALL WRITE SERVICES DEPARTMENT REQUESTS THAT NO UTILITY FIBERS, METER BASES, PIEDISTALS, ETC., PUBLIC OR PRIVATE, BE PLACED IN THE CHAMFERED CORNERS OF ALLEYWAYS.  
 11. DRAINAGE EASEMENT:  
 LPL = LUBBOCK POWER & LIGHT  
 PSE = PROCESSION ACCESS EASEMENT  
 TRF = 4 X 4 (MINIMUM) TRANSFORMER PAD EASEMENT (HEREIN GRANTED TO SPEC) INDICATED BY SYMBOL: [Symbol]  
 USE = UNDERGROUND STREET LIGHT CABLE EASEMENT (HEREIN GRANTED TO LPL).  
 ULE = UNDERGROUND UTILITY EASEMENT.  
 ROW = RIGHT-OF-WAY.  
 CM = CONTROLLING MONUMENT.  
 CON = COUNTY CLERK'S FILE NUMBER.  
 PFD = PLAT AND DEDICATION NUMBER.  
 PFD# = PHYSICAL MONUMENT OF RECORD DEDICITY.  
 ALL CORNERS MONUMENTED WITH 12" IRON ROD WITH CAP MARKED "AND ENGINEER". UNLESS OTHERWISE SPECIFIED, BEARINGS AND DISTANCES RELATIVE TO THE TEXAS COORDINATE SYSTEM OF 1983, TEXAS NORTH CENTRAL ZONE. COORDINATES SHOWN HEREON ARE BASED ON THE TEXAS COORDINATE SYSTEM OF 1983, TEXAS NORTH CENTRAL ZONE. DISTANCES AS SHOWN HEREON ARE IN FEET. THE GRAPHIC SCALE FACTOR IS 0.999996.  
 THESE PLAT LIMITS CONTAIN 25.74 ACRES OF LAND.  
 DESCRIPTION OF THESE PLAT LIMITS ARE ON A SEPARATE DOCUMENT, OF SAME DATE HERETHIN.

APPROVED THIS \_\_\_\_\_ DAY OF \_\_\_\_\_ 20\_\_\_\_  
 BY THE PLANNING AND ZONING COMMISSION OF THE CITY OF LUBBOCK, TEXAS.  
 CHAIRMAN: \_\_\_\_\_  
 PROFESSOR OF PLANNING: \_\_\_\_\_  
 W & SIGN-OFF (ADDRESS) ADDRESSED

**\$47,500**

- 0 baths
- Unimproved Land
- Land
- Active

# 7806 93RD STREET, LUBBOCK, TX, 79424

<https://aycockrealtytx.com>

10 Lots available in Everest Heights addition, located in South-West Lubbock, in the highly desired Frenship school district! These lots can be sold as a package or individually. This property is in close proximity to FISD Schools, conveniently located to Marsha Sharp Freeway, and 82nd Street, as well as the new Covenant Park.



**Jenna Ham**  
 Aycock Realty Group, LLC



---

## Basics

**Category:** Land

**Status:** Active

**Lot size:** 0.13 sq ft

**Zoning:** C-1

**County:** Lubbock

**Type:** Unimproved Land

**Bathrooms:** 0 baths

**Lot Size Acres:** 0.13 acres

**Address:** 7806 93rd Street, Lubbock, TX, 79424

---

## Building Details

**Sewer:** Public Sewer

**Current Use:** Unimproved

**Possible Use:** Residential, Single Family

---

## Amenities & Features

**Basement:** No

**Private Pool:** No

**Fireplace:** No

**Fencing:** None

**WaterSource:** Public

**Lot Features:** City Lot

---

## Nearby Schools

**Elementary School:** Upland Heights

---

## School Information

**HighSchool:** Frenship

**Middle Or Junior School:** Frenship

---

## Miscellaneous



**Road Surface Type:** Paved

**Listing Terms:** Cash, Conventional, FHA, VA Loan

---

## Courtesy of

**List Office Name:** Aycock Realty Group, LLC

