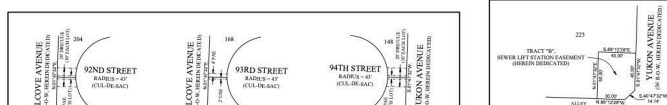




LINE	BEARING	DISTANCE
L1	N 89° 47' 32" E	23.21
L2	S 84° 12' 28" E	21.21
L3	N 89° 47' 32" E	21.21
L4	N 88° 12' 28" E	20.00
L5	S 84° 12' 28" E	14.14
L6	N 88° 12' 28" E	14.14
L7	N 88° 12' 28" E	14.14
L8	N 88° 12' 28" E	14.14
L9	N 88° 12' 28" E	14.14
L10	N 88° 12' 28" E	14.14
L11	S 84° 12' 28" E	21.21
L12	N 88° 12' 28" E	20.00
L13	N 88° 12' 28" E	14.14
L14	S 84° 12' 28" E	14.14
L15	N 88° 12' 28" E	21.21
L16	N 88° 12' 28" E	21.21
L17	N 88° 12' 28" E	14.14
L18	N 88° 12' 28" E	14.14
L19	N 88° 12' 28" E	14.14
L20	N 88° 12' 28" E	14.14
L21	N 88° 12' 28" E	14.14
L22	N 88° 12' 28" E	14.14
L23	N 88° 12' 28" E	14.14
L24	N 88° 12' 28" E	14.14
L25	N 88° 12' 28" E	14.14
L26	N 88° 12' 28" E	14.14
L27	N 88° 12' 28" E	14.14
L28	N 88° 12' 28" E	14.14
L29	N 88° 12' 28" E	14.14
L30	N 88° 12' 28" E	14.14
L31	N 88° 12' 28" E	14.14
L32	N 88° 12' 28" E	14.14
L33	N 88° 12' 28" E	14.14
L34	N 88° 12' 28" E	14.14
L35	N 88° 12' 28" E	14.14
L36	N 88° 12' 28" E	14.14
L37	N 88° 12' 28" E	14.14
L38	N 88° 12' 28" E	14.14
L39	N 88° 12' 28" E	14.14
L40	N 88° 12' 28" E	14.14
L41	N 88° 12' 28" E	14.14
L42	N 88° 12' 28" E	14.14
L43	N 88° 12' 28" E	14.14
L44	N 88° 12' 28" E	14.14
L45	N 88° 12' 28" E	14.14
L46	N 88° 12' 28" E	14.14
L47	N 88° 12' 28" E	14.14
L48	N 88° 12' 28" E	14.14
L49	N 88° 12' 28" E	14.14
L50	N 88° 12' 28" E	14.14
L51	N 88° 12' 28" E	14.14
L52	N 88° 12' 28" E	14.14
L53	N 88° 12' 28" E	14.14
L54	N 88° 12' 28" E	14.14
L55	N 88° 12' 28" E	14.14
L56	N 88° 12' 28" E	14.14
L57	N 88° 12' 28" E	14.14
L58	N 88° 12' 28" E	14.14
L59	N 88° 12' 28" E	14.14
L60	N 88° 12' 28" E	14.14
L61	N 88° 12' 28" E	14.14
L62	N 88° 12' 28" E	14.14
L63	N 88° 12' 28" E	14.14
L64	N 88° 12' 28" E	14.14
L65	N 88° 12' 28" E	14.14
L66	N 88° 12' 28" E	14.14
L67	N 88° 12' 28" E	14.14
L68	N 88° 12' 28" E	14.14
L69	N 88° 12' 28" E	14.14
L70	N 88° 12' 28" E	14.14
L71	N 88° 12' 28" E	14.14
L72	N 88° 12' 28" E	14.14
L73	N 88° 12' 28" E	14.14
L74	N 88° 12' 28" E	14.14
L75	N 88° 12' 28" E	14.14
L76	N 88° 12' 28" E	14.14
L77	N 88° 12' 28" E	14.14
L78	N 88° 12' 28" E	14.14
L79	N 88° 12' 28" E	14.14
L80	N 88° 12' 28" E	14.14
L81	N 88° 12' 28" E	14.14
L82	N 88° 12' 28" E	14.14
L83	N 88° 12' 28" E	14.14
L84	N 88° 12' 28" E	14.14
L85	N 88° 12' 28" E	14.14
L86	N 88° 12' 28" E	14.14
L87	N 88° 12' 28" E	14.14
L88	N 88° 12' 28" E	14.14
L89	N 88° 12' 28" E	14.14
L90	N 88° 12' 28" E	14.14
L91	N 88° 12' 28" E	14.14
L92	N 88° 12' 28" E	14.14
L93	N 88° 12' 28" E	14.14
L94	N 88° 12' 28" E	14.14
L95	N 88° 12' 28" E	14.14
L96	N 88° 12' 28" E	14.14
L97	N 88° 12' 28" E	14.14
L98	N 88° 12' 28" E	14.14
L99	N 88° 12' 28" E	14.14
L100	N 88° 12' 28" E	14.14

CURVE	RADIUS	ARC LENGTH	DELTA ANGLE	CHORD LENGTH	CHORD BEARING
C1	45.00	3.88	37° 12' 28"	3.88	S 88° 12' 28" E
C2	45.00	23.18	37° 12' 28"	23.88	S 87° 28' 58" E
C3	45.00	36.88	47° 28' 58"	36.88	S 81° 28' 58" E
C4	45.00	59.88	79° 53' 28"	59.22	N 47° 54' 18" E
C5	45.00	87.88	89° 21' 18"	61.08	N 42° 28' 58" E
C6	45.00	27.88	36° 48' 28"	27.10	S 72° 58' 58" E
C7	45.00	26.08	37° 18' 28"	26.00	S 73° 18' 28" E
C8	45.00	3.88	4° 48' 28"	3.33	N 89° 28' 58" E
C9	45.00	22.18	32° 31' 18"	22.42	N 87° 48' 58" E
C10	45.00	26.08	48° 12' 28"	35.01	N 78° 28' 28" E
C11	45.00	39.88	79° 16' 28"	54.88	S 17° 58' 58" E
C12	45.00	59.88	79° 16' 28"	54.88	S 17° 58' 58" E



NOTES:  
1. SCALE 1" = 100'  
2. ALL STREETS, ALLEYS, AND EASEMENTS WITHIN PLAT LIMITS ARE HEREBY DEDICATED, UNLESS NOTED OTHERWISE.  
3. NO EASEMENT SHALL BE GRANTED OR RESERVED UNLESS IT IS SPECIFICALLY NOTED ON THIS PLAT.  
4. ALL UTILITY SERVICES SHALL BE IN ACCORDANCE WITH THE "UNDERGROUND UTILITIES POLICY" STATEMENT BY THE PLANNING AND ZONING COMMISSION OF THE CITY OF LUBBOCK, TEXAS AND THE PROVISIONS OF SECTION 18.06 OF THE LUBBOCK CODE OF ORDINANCES.  
5. ALL EXISTING OR PROPOSED UTILITY SERVICES TO AND ON TRACTS INDICATED BY THIS PLAT SHALL BE CONTAINED IN THE PUBLIC RIGHT-OF-WAY AND NOT WITHIN AN EASEMENT INDICATED BY THIS PLAT. SHALL BE WITHIN A PROPER UTILITY EASEMENT GRANTED BY THE OWNER OF SAID PROPERTY BY SEPARATE RECORDS INSTRUMENT PRIOR TO THE PROVISION OF SUCH SERVICE. SUCH EASEMENTS SHALL BE AT THE EXPENSE OF THE ENTITY REQUESTING SUCH INSTALLATION.  
6. ALL EASEMENTS HEREBY GRANTED SHALL ENTITILE THE CITY OR THE UTILITY COMPANY USING SUCH EASEMENTS TO THE RIGHT TO REMOVE, REPAIR OR REPLACE ANY LINES, PIPES, CONDUITS, OR POLES WITHIN SUCH EASEMENTS AS MAY BE DETERMINED BY THE CITY OR UTILITY COMPANY WITHOUT THE CITY OR UTILITY COMPANY BEING RESPONSIBLE OR LIABLE FOR THE REPLACEMENT OR IMPROVEMENTS, PAVING OR SURFACING OF THE EASEMENT OR FOR ANY SUCH REPAIR, REMOVAL, OR REPLACEMENT. EASEMENTS DESIGNATED OR INTENDED FOR VEHICULAR PASSAGE (UTILITY AND EMERGENCY) OR FOR PEDESTRIAN ACCESS SHALL NOT BE FORCED OR OTHERWISE OBSTRUCTED.  
7. ANY EASEMENTS OR RIGHTS-OF-WAY SHOWN AS "TO BE DEDICATED BY SEPARATE INSTRUMENT" ARE SHOWN ON THE PLAT FOR INFORMATION PURPOSES ONLY. THIS PLAT DOES NOT DEDICATE SAID EASEMENTS.  
8. MINIMUM FLOOR ELEVATIONS SHALL CONFORM TO THE REQUIREMENTS OF THE LUBBOCK DRAINAGE CRITERIA MANUAL, AS ADOPTED BY ORDINANCE 10022, AS AMENDED, AND SECTION 18.06.111, SECTION 18.14.06 AND SECTION 18.03.073 OF THE LUBBOCK CODE OF ORDINANCES.  
9. IN ORDER TO PREVENT DAMAGE TO PUBLIC AND PRIVATE UTILITIES AND TO MINIMIZE AND OR ELIMINATE INTERRUPTION OF UTILITY SERVICES, THE CITY OF LUBBOCK SUELS WHERE SERVICES DEPARTMENT REQUESTS THAT NO UTILITY METER, METER BASE, PEDISTAL, ETC., PUBLIC OR PRIVATE, BE PLACED IN THE CHAMFERED CORNERS OF ALLEY WAYS.  
10. TRANSFORMER EASEMENT  
LPL = LUBBOCK POWER & LIGHT  
PAC = PEDESTRIAN ACCESS EASEMENT  
TPE = 4' X 4' (MINIMUM) TRANSFORMER PAD EASEMENT (HEREIN GRANTED TO SPEC), INDICATED BY SYMBOL: [Symbol]  
USE = UNDERGROUND STREET LIGHT CABLE EASEMENT (HEREIN GRANTED TO LPL).  
LUL = UNDERGROUND UTILITY EASEMENT.  
RLOM = RIGHT-OF-WAY  
SECT = SECT 16 PLANS ELECTRIC CO.  
CR = CONTROLLING MONUMENT  
COPN = COUNTY CLERK'S FILE NUMBER  
PBD = PLAT AND DEDICATION NUMBER  
PBD = PHYSICAL MONUMENT OF RECORD DEDICATION.  
ALL CORNERS MONUMENTED WITH 12" IRON ROD WITH CAP MARKED "AND ENGINEERING" UNLESS OTHERWISE SPECIFIED.  
BEARINGS AND GRID BEARINGS RELATIVE TO THE TEXAS COORDINATE SYSTEM OF 1983, TEXAS NORTH CENTRAL ZONE. THE CONVERSIONS ARE TO THIS NORTH IS 41° 18' 28". THE CONVERSION SCALE FACTOR IS 0.999999.  
COORDINATES SHOWN HEREON ARE BASED ON THE TEXAS COORDINATE SYSTEM OF 1983, TEXAS NORTH CENTRAL ZONE. DISTANCES AS SHOWN HEREON ARE IN FOOTAGE, IN U.S. SURVEY FEET.  
THESE PLAT LIMITS CONTAIN 25.748 ACRES OF LAND.  
DESCRIPTION OF THESE PLAT LIMITS ARE ON A SEPARATE DOCUMENT, OF SAME DATE HEREWITH.

\$47,500

# 7813 93RD STREET, LUBBOCK, TX, 79424

<https://aycockrealtytx.com>

10 Lots available in Everest Heights addition, located in South-West Lubbock, in the highly desired Frenship school district! These lots can be sold as a package or individually. This property is in close proximity to FISD Schools, conveniently located to Marsha Sharp Freeway, and 82nd Street, as well as the new Covenant Park.



**Jenna Ham**  
Aycock Realty Group, LLC

- 0 baths
- Unimproved Land
- Land
- Active





## Basics

<b>Category:</b> Land	<b>Type:</b> Unimproved Land
<b>Status:</b> Active	<b>Bathrooms:</b> 0 baths
<b>Lot size:</b> 0.13 sq ft	<b>Lot Size Acres:</b> 0.13 acres
<b>Zoning:</b> C-1	<b>Address:</b> 7813 93rd Street, Lubbock, TX, 79424
<b>County:</b> Lubbock	



## Building Details

<b>Sewer:</b> Public Sewer	<b>Current Use:</b> Unimproved
<b>Possible Use:</b> Residential, Single Family	



## Amenities & Features

<b>Basement:</b> No	<b>Private Pool:</b> No
<b>Fireplace:</b> No	<b>Fencing:</b> None
<b>WaterSource:</b> Public	<b>Lot Features:</b> City Lot



## Nearby Schools

**Elementary School:** Upland Heights



## School Information

<b>HighSchool:</b> Frenship	<b>Middle Or Junior School:</b> Frenship
-----------------------------	--



## Miscellaneous



**Road Surface Type:** Paved

**Listing Terms:** Cash, Conventional, FHA, VA Loan

---

# Courtesy of

**List Office Name:** Aycock Realty Group, LLC

